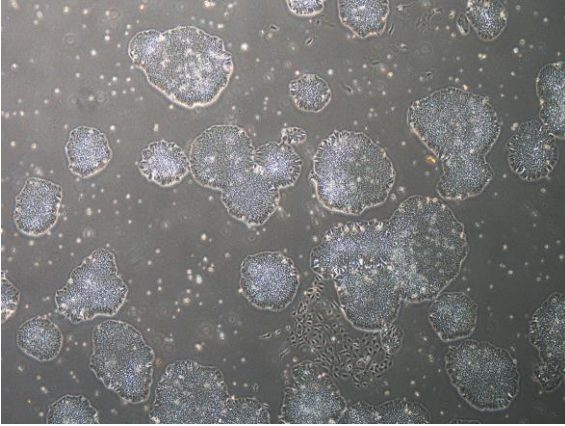
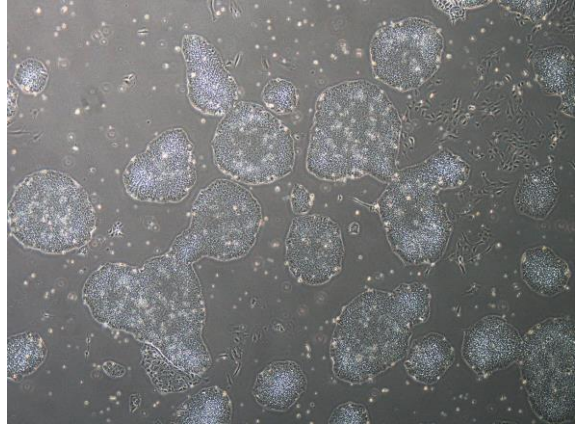


【 CiRA-j-1498 】 Morphology of iPSC colonies

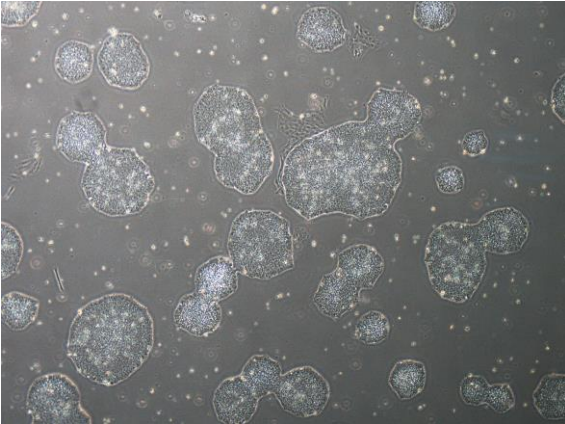
CiRA-j-1498-A: passage-2



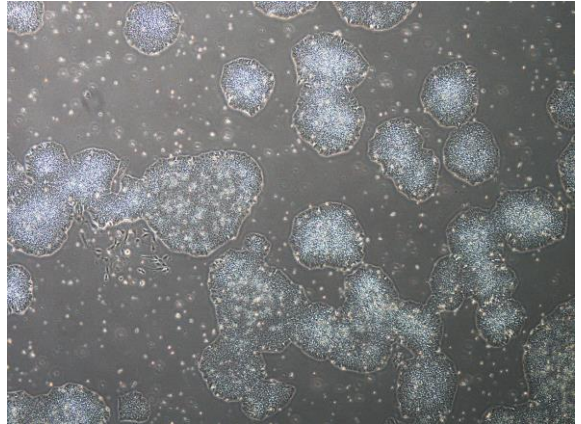
CiRA-j-1498-B: passage-2



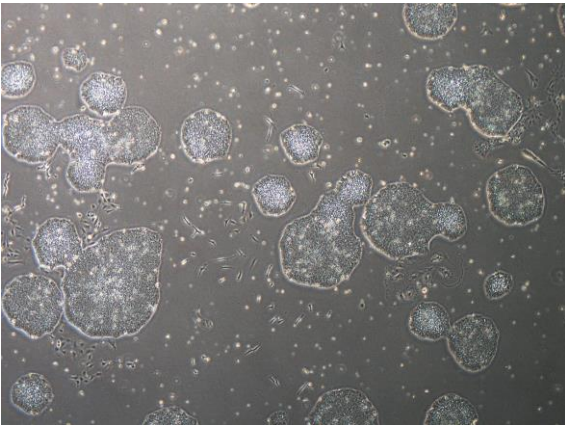
CiRA-j-1498-C: passage-2



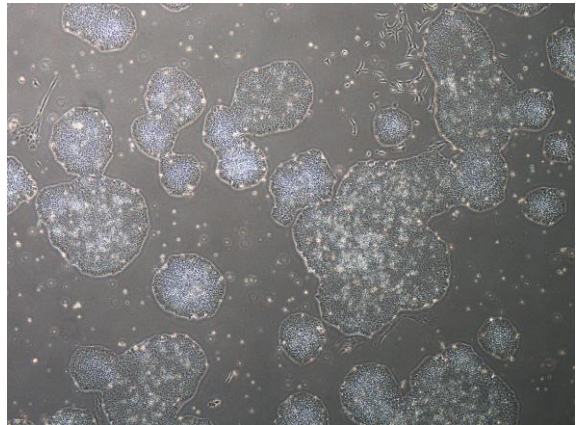
CiRA-j-1498-D: passage-2



CiRA-j-1498-E: passage-2



CiRA-j-1498-F: passage-2



(All images were captured at 4x magnification)